

Music Theory Diagnostic Test

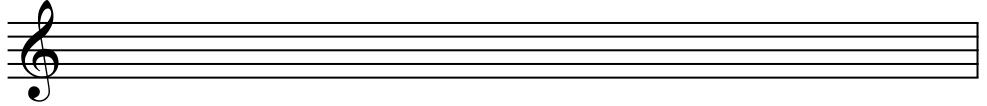
NAME:

Send the completed test to: Dr. Trevor Weston
Drew University
36 Madison Ave.
Madison, NJ 07940

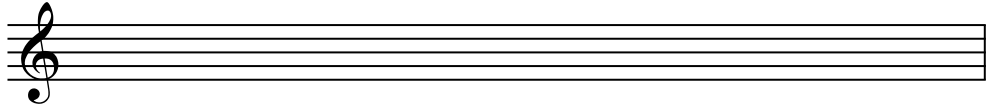
or email a completed scanned test to tweston@drew.edu

or bring the completed test to Dr. Weston in the Department of Music

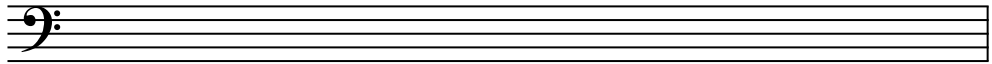
1. Write an **E** Major scale.



2. Write a **g** minor scale.



3. Write a **b** harmonic minor scale.



4. Create the Major key signatures indicated.

B \flat Major



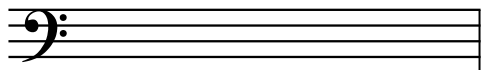
A Major



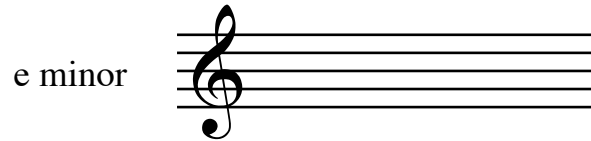
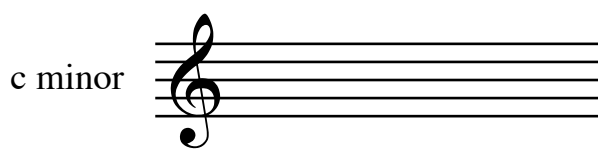
G \flat Major



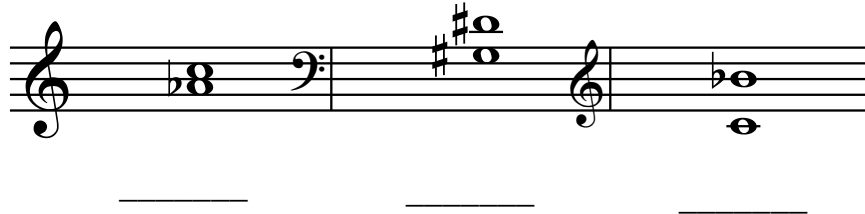
B Major



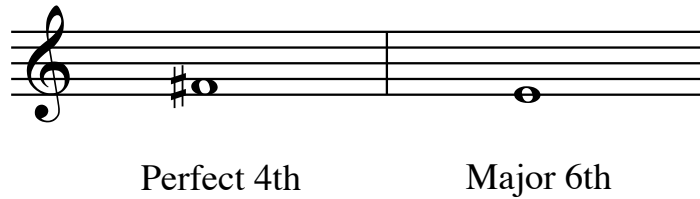
5. Create the minor key signatures indicated.



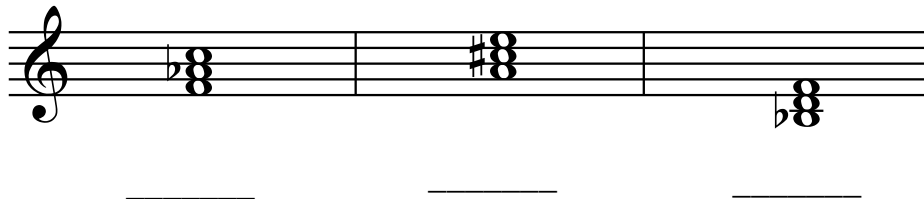
6. Identify the intervals below.



7. Add the correct note above the given pitch to create the interval indicated.



8. Identify these triads.



9. Create the triads indicated above the given notes.



